

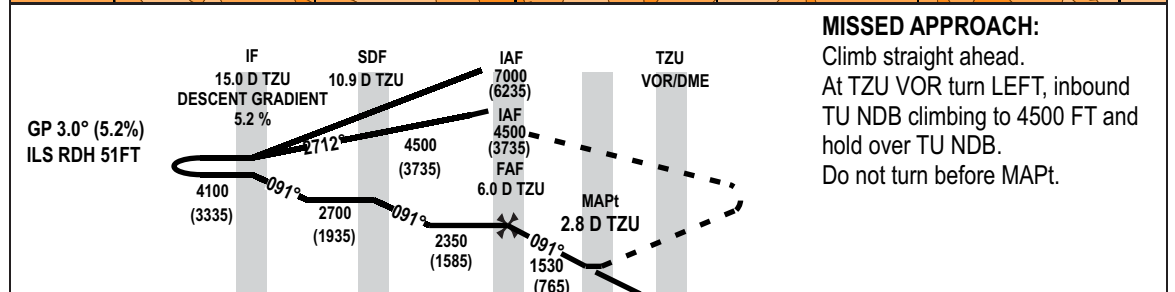
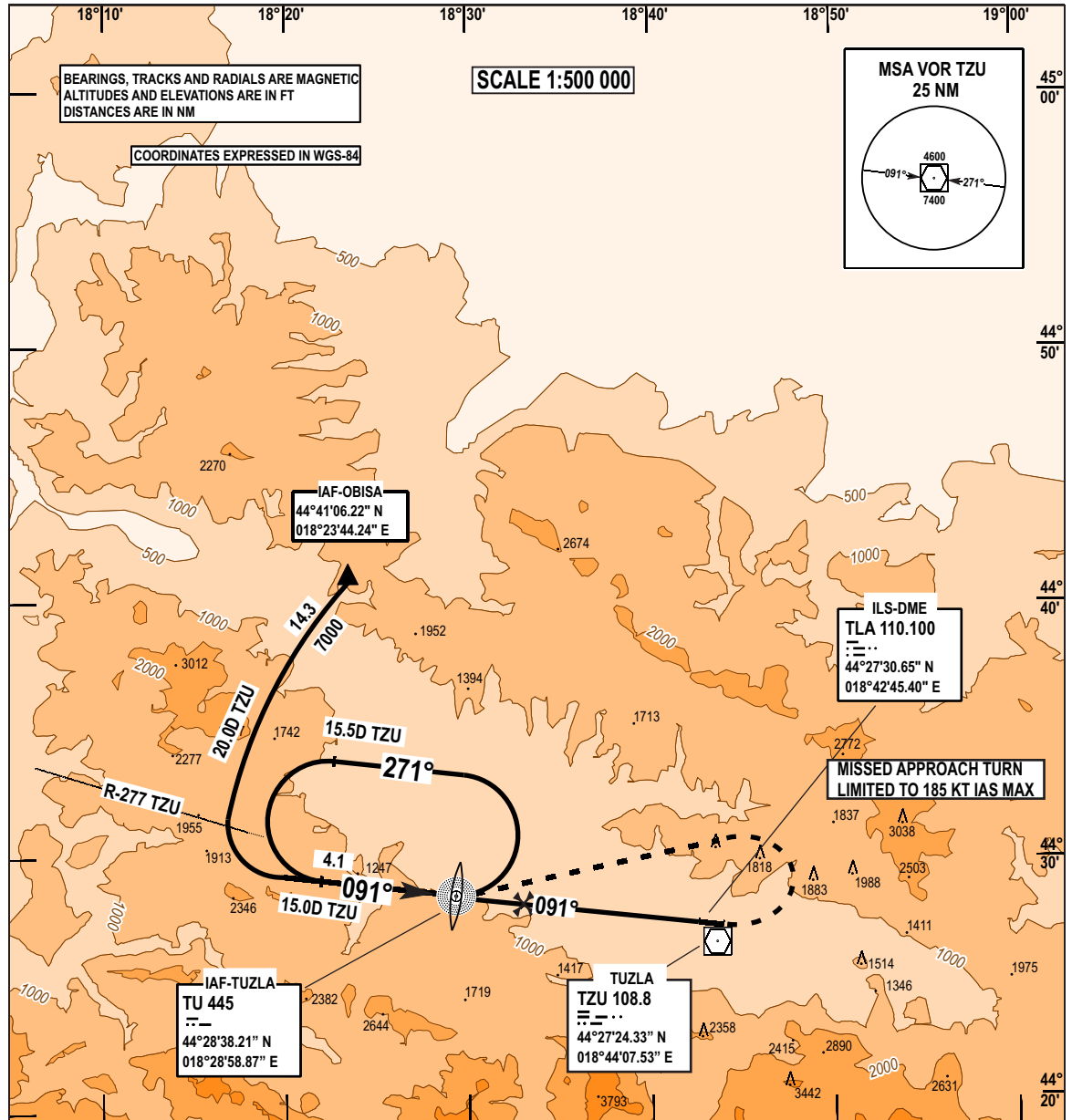
**INSTRUMENT
APPROACH
CHART - ICAO**

**AERODROM ELEV 784 FT
HEIGHTS RELATED TO
THR RWY 09 ELEV 765 FT**

**TRANSITION
ALTITUDE
10 000 FT
VAR 5° E (2020)**

**APP 120.350
TWR 132.925
ATIS 133.825**

**TUZLA (LQTZ)
VOR/DME
RWY 09**



MISSED APPROACH:
Climb straight ahead.
At TZU VOR turn LEFT, inbound
TU NDB climbing to 4500 FT and
hold over TU NDB.
Do not turn before MAPt.

NM to/from THR09

OCA (H)	A	B	C	D
Straight in app	1530 (765)			
Circling	1660 (895)	1760 (995)	2280 (1515)	2390 (1625)

Note: Visual circling not authorised south
of RWY due to highly mountainous terrain

FAF TO MAPt DISTANCE 3.2 NM TIMING NOT AUTHORISED FOR DEFINING THE MAPt						
KT	70	90	100	120	140	160
MIN : SEC	2:45	2:08	1:56	1:36	1:23	1:12
Rate of descent FT/MIN	299	385	427	513	599	684

CHG: ATIS added

THIS PAGE INTENTIONALY LEFT BLANK